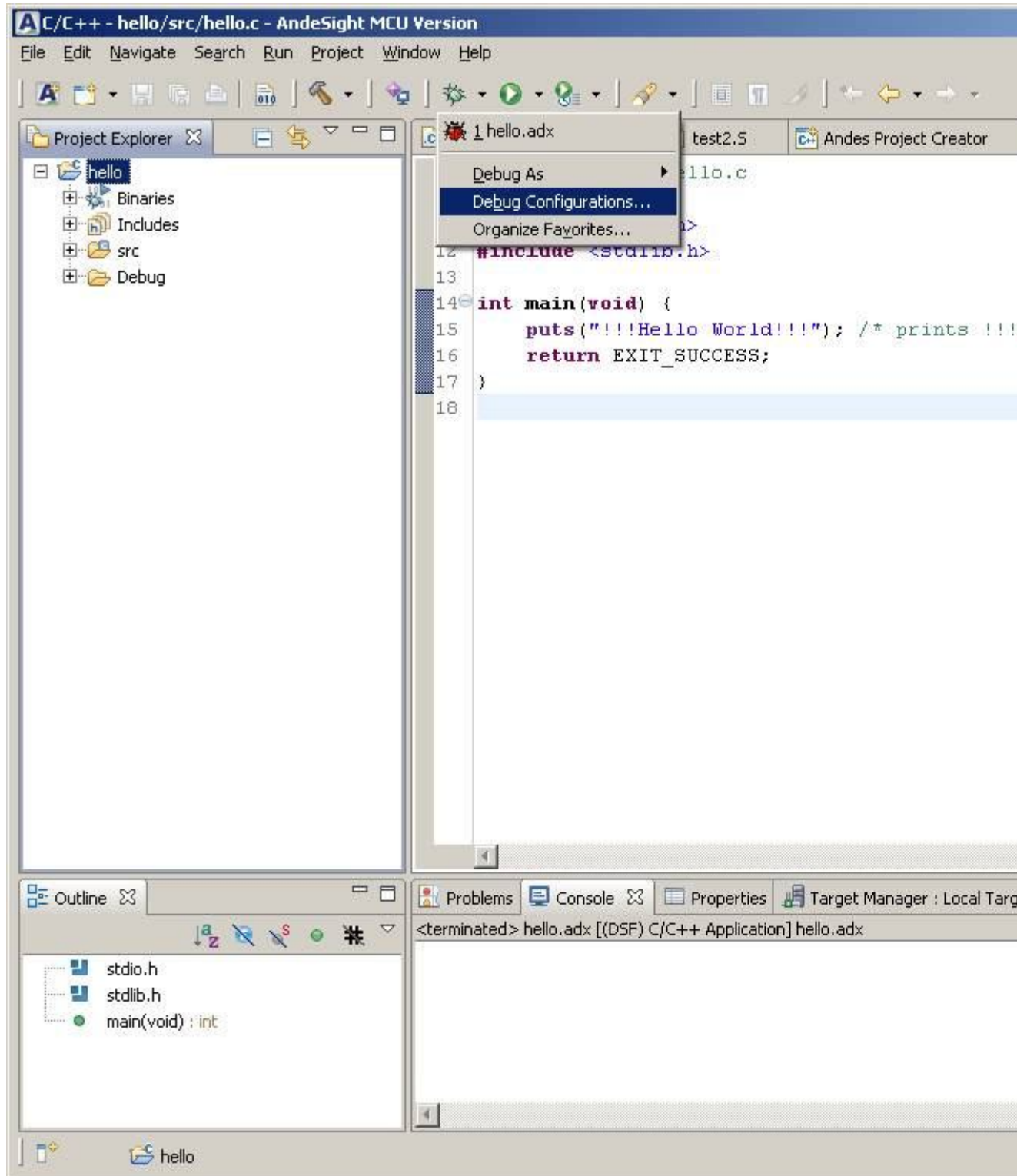
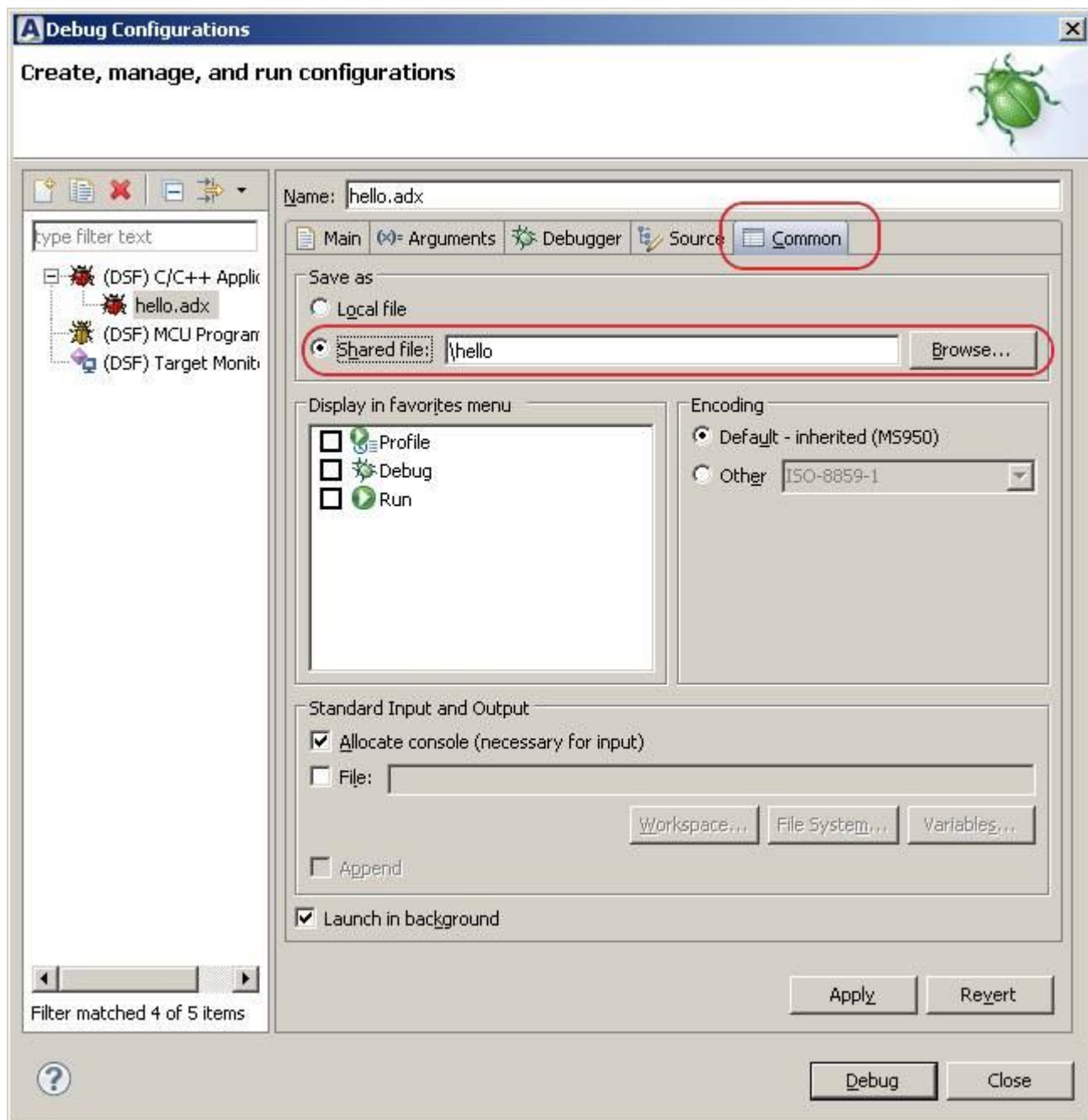


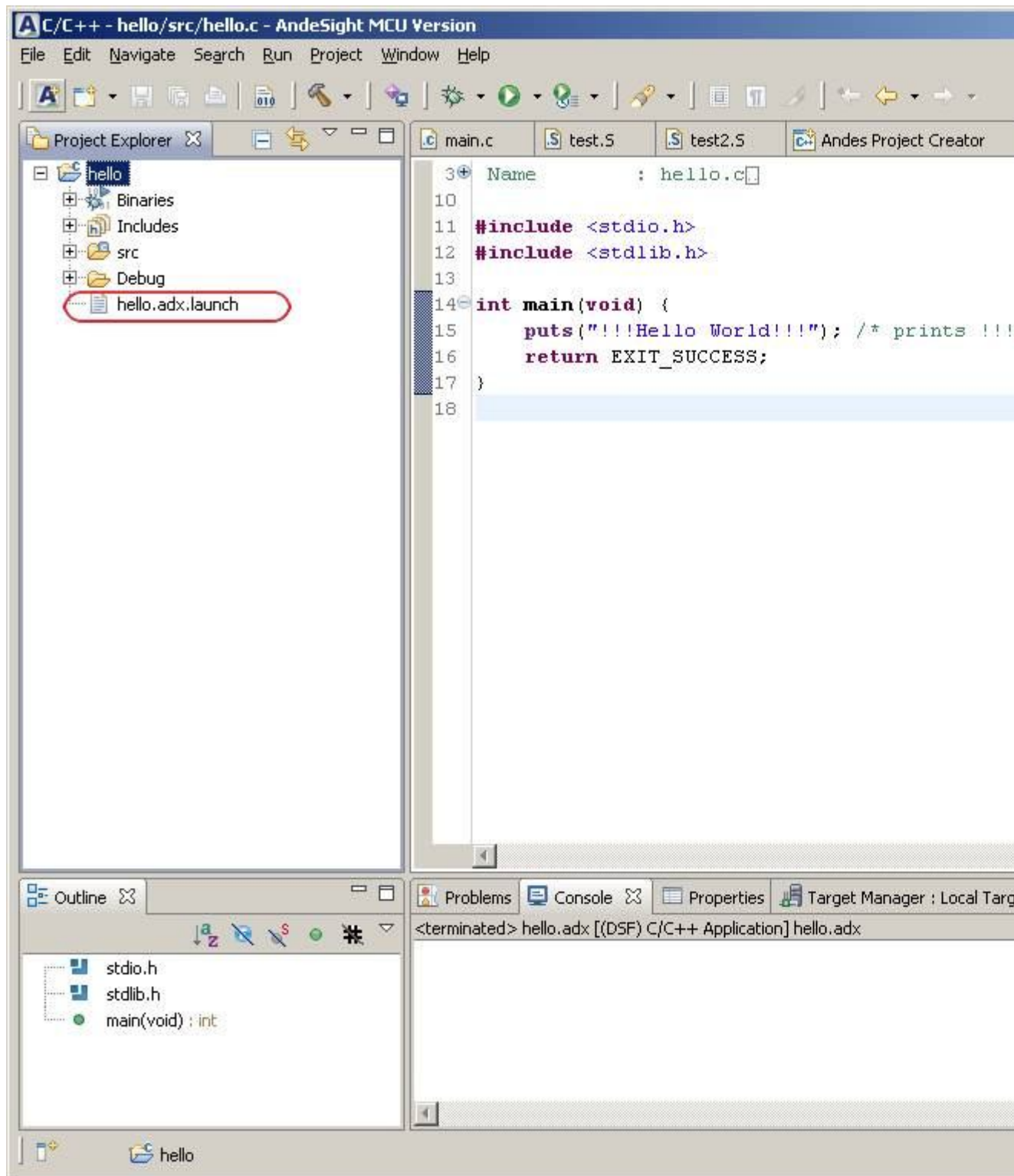
1. Export project with Launch Configuration

Select Run -> Debug Configurations...

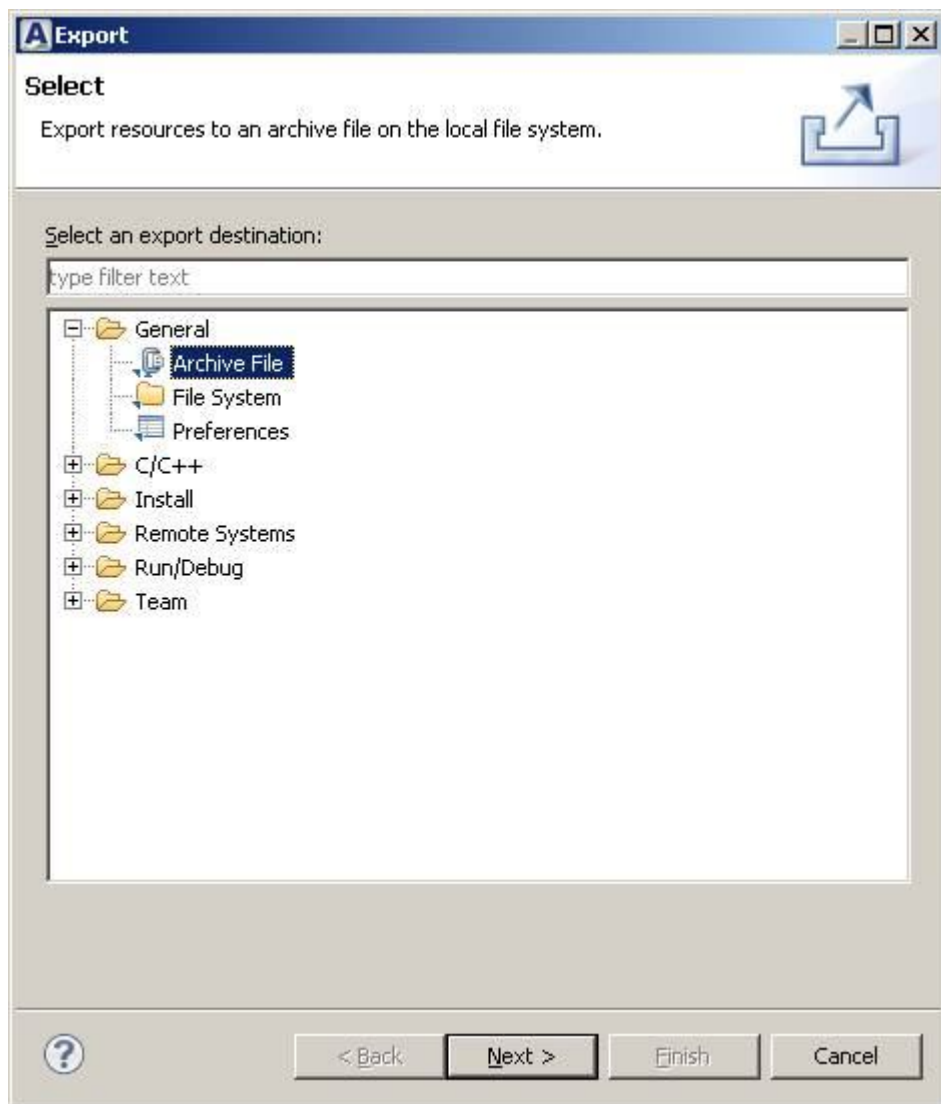


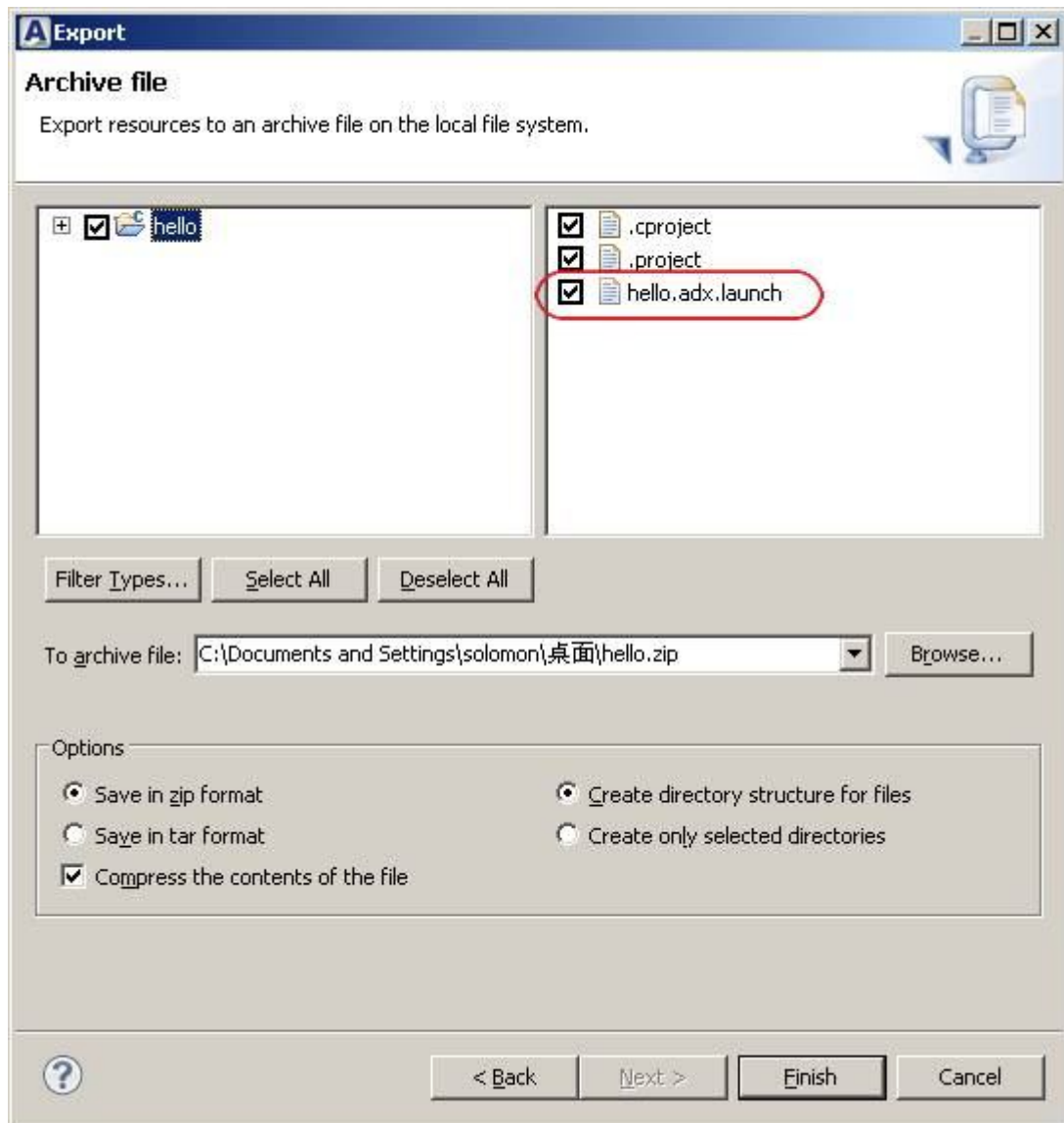
Select debug configuration (e.g. hello.adx), select Common tab, select Shared file, click Apply.





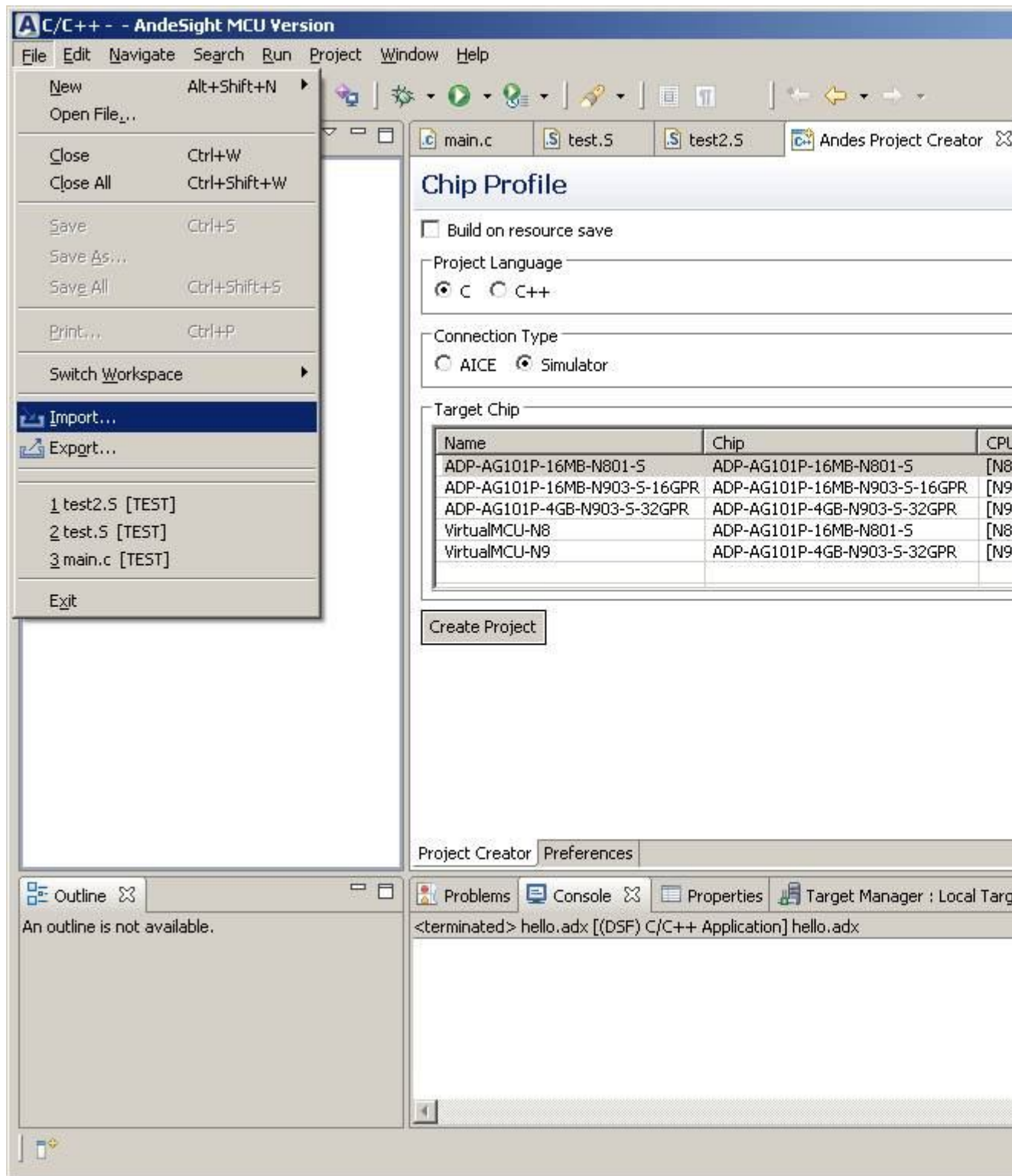
Select File -> Export -> Archive File



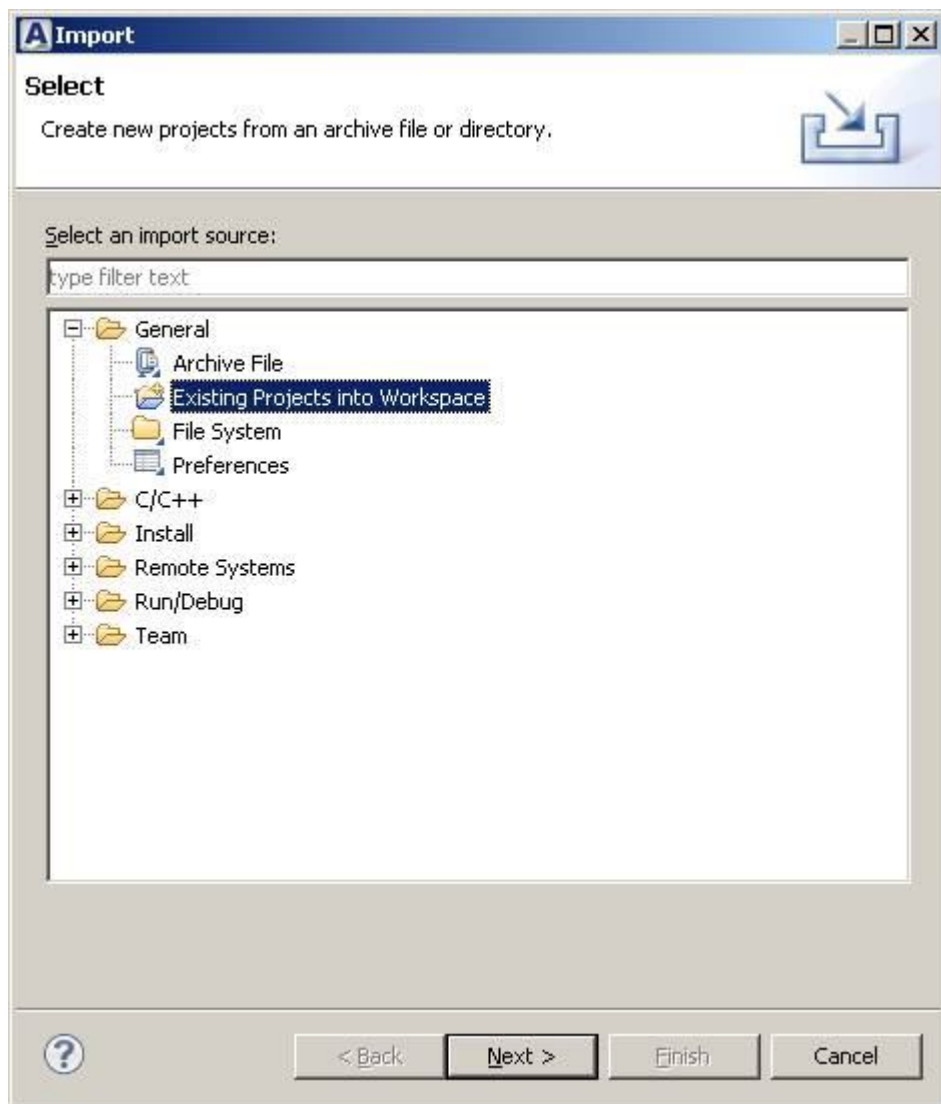


2. Import project with Launch Configuration (new Workspace)

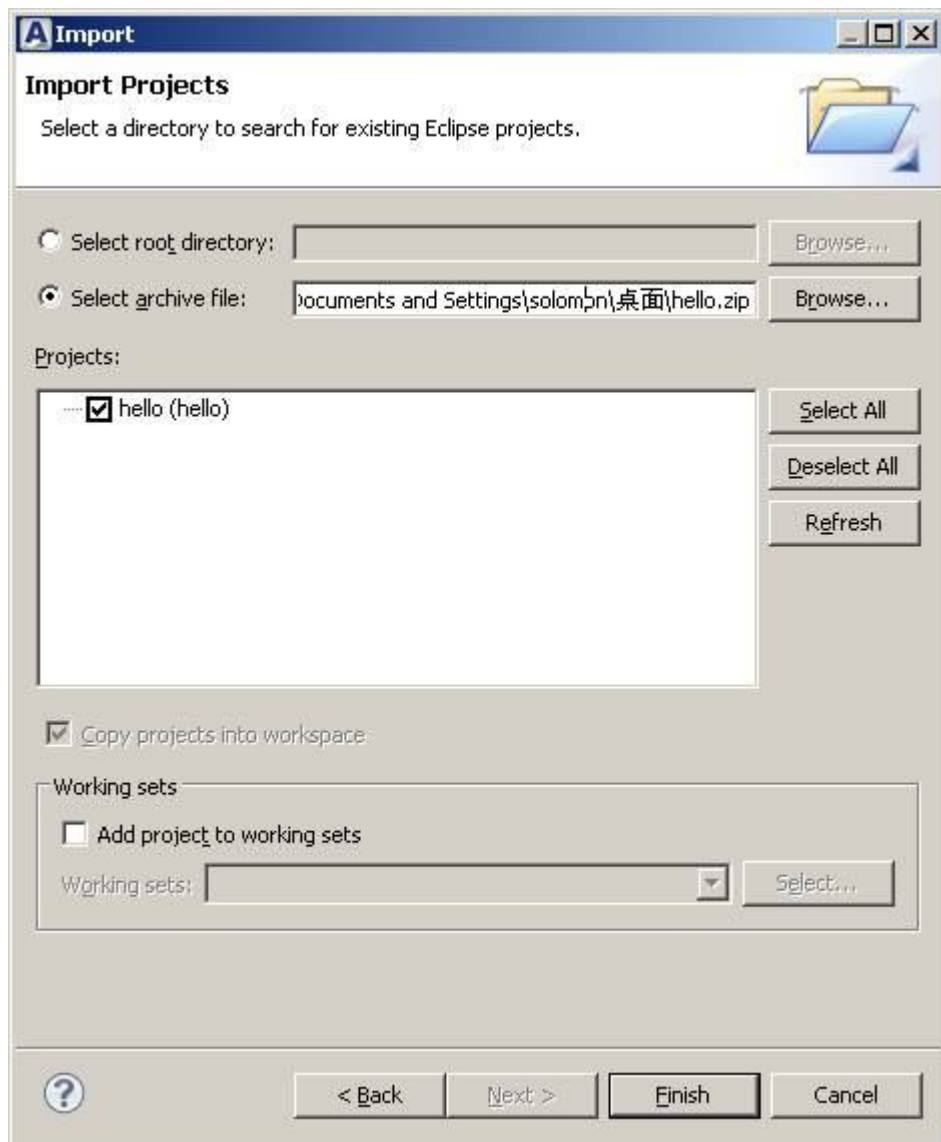
Select File -> Import

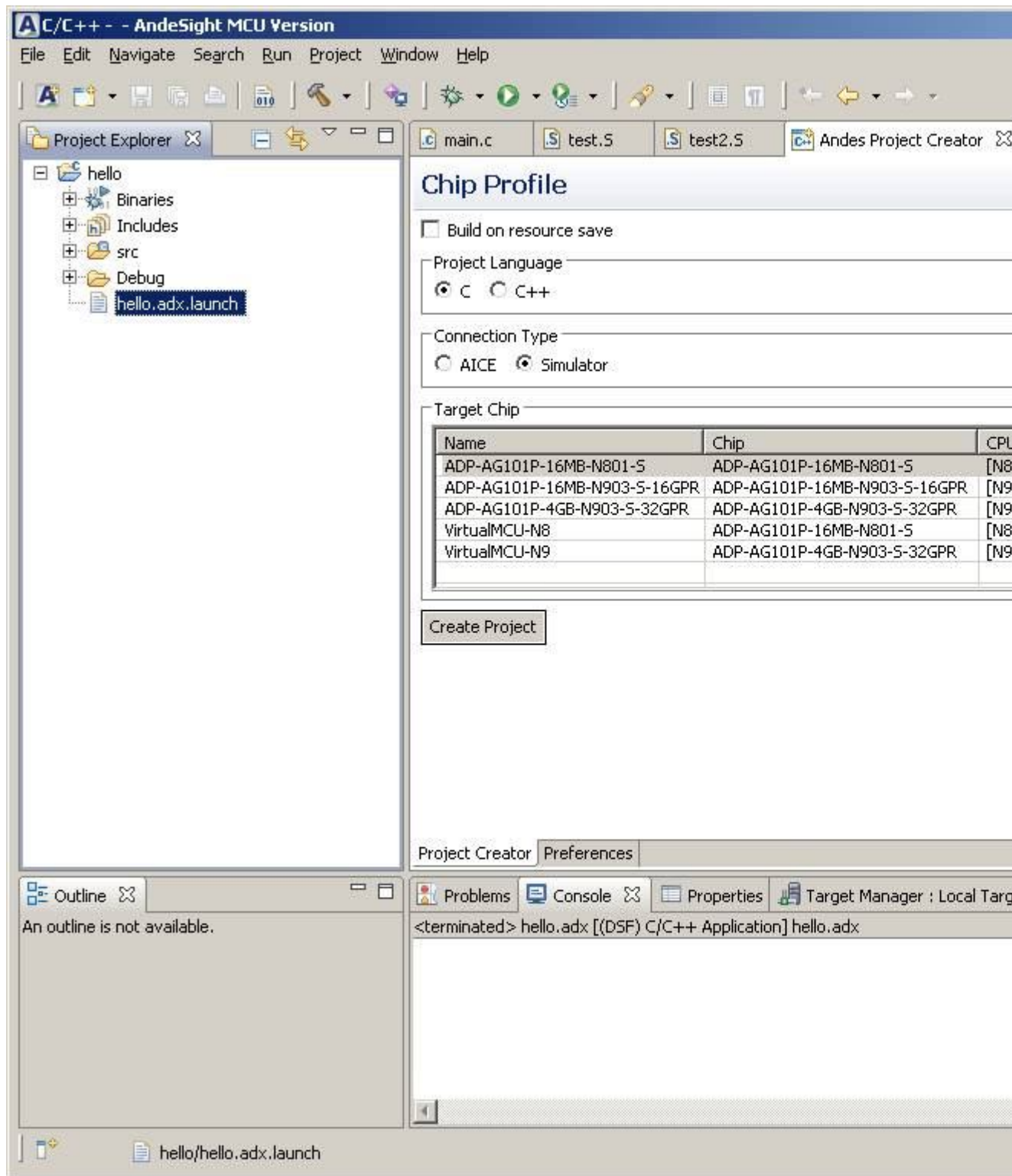


Select Existing Projects into Workspace

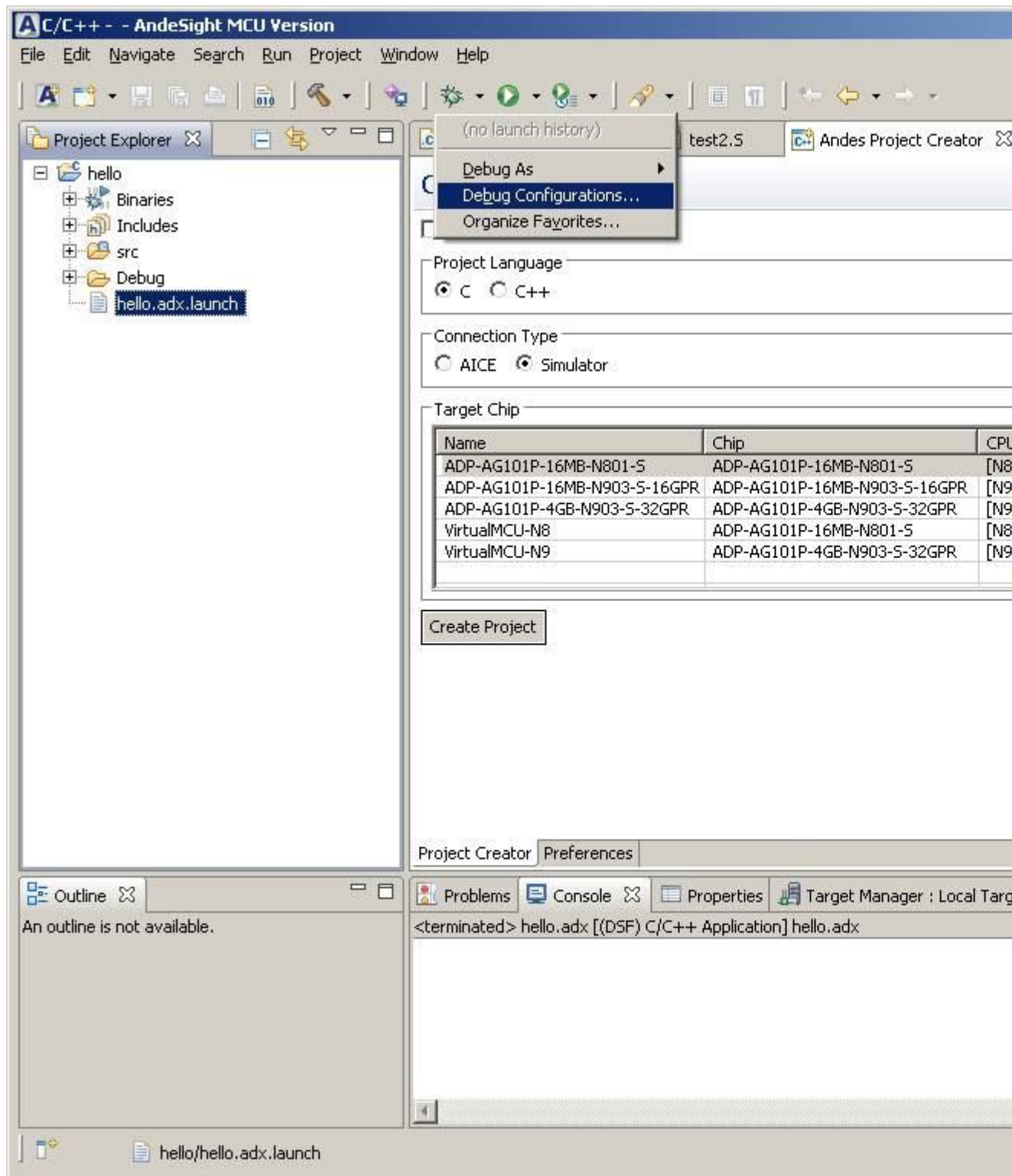


Select archive file





Select Run -> Debug Configurations...



Select debug configuration (e.g. hello.adx)

