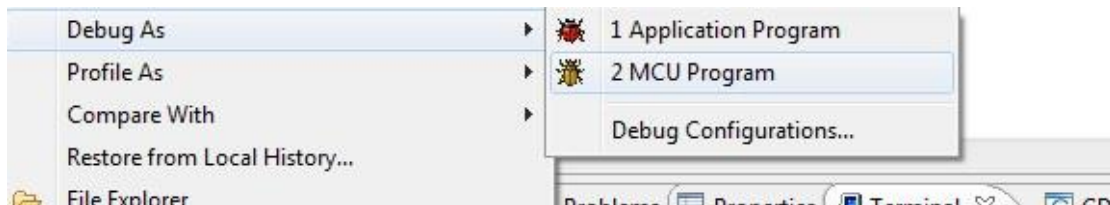
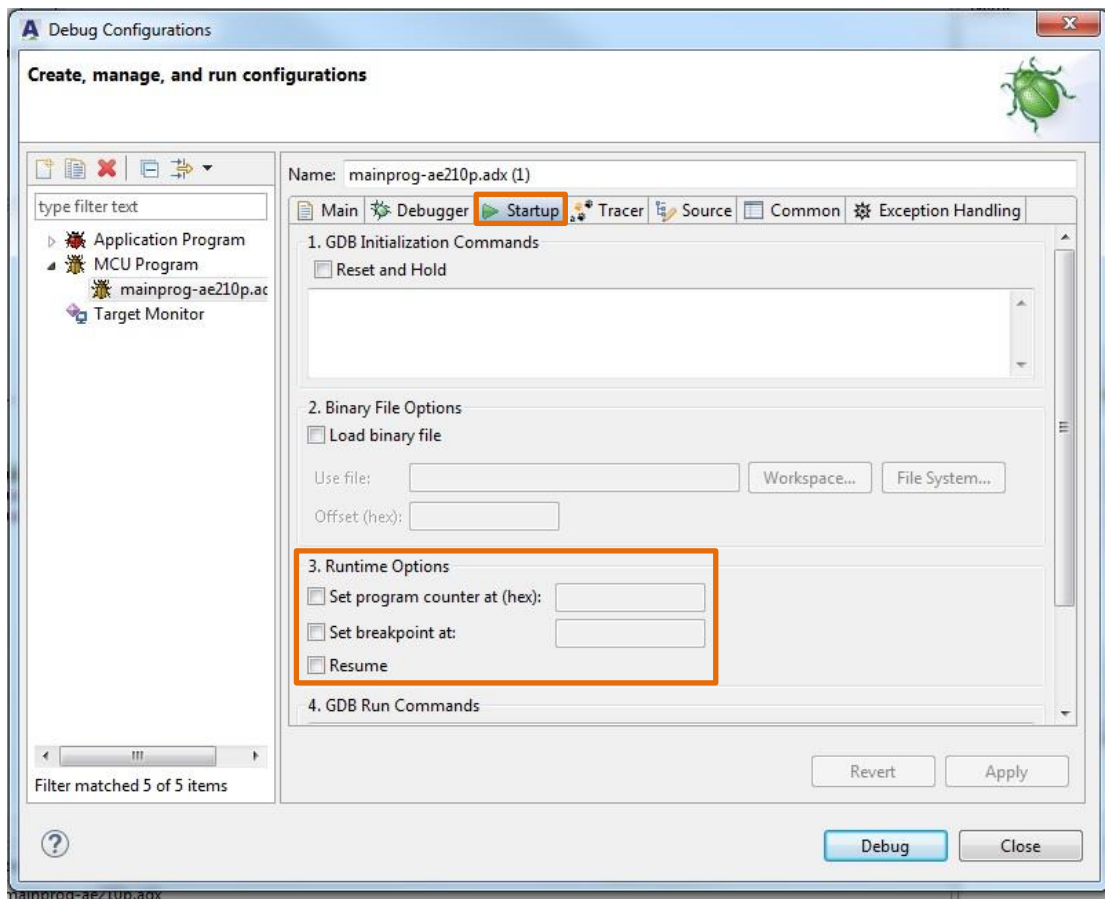


When the program is launched and you want to set the breakpoint at a specific address, please follow these steps:

Step 1: Right click on the project directory in Project Explorer and select "Debug As -> MCU Program"



Step 2: In the "Debug Configurations" dialog box, click on the "Startup" tab.



Step 3: Go to "3. Runtime Options"



3. Runtime Options

☒ Set program counter at (hex): 0

☒ Set breakpoint at: 0x00700000

☒ Resume

Set program counter at (hex): Select this option to specify a memory address for PC to move to and start debugging there. In the above example, the program counter will start from 0x0.

Set breakpoint at: Select this option to enter a function name, line number or memory address as the breakpoint. In the example above, the initial execution will suspend when PC hits the entered address, e.g. 0x00700000.

Resume: Select this option to resume the halted execution.