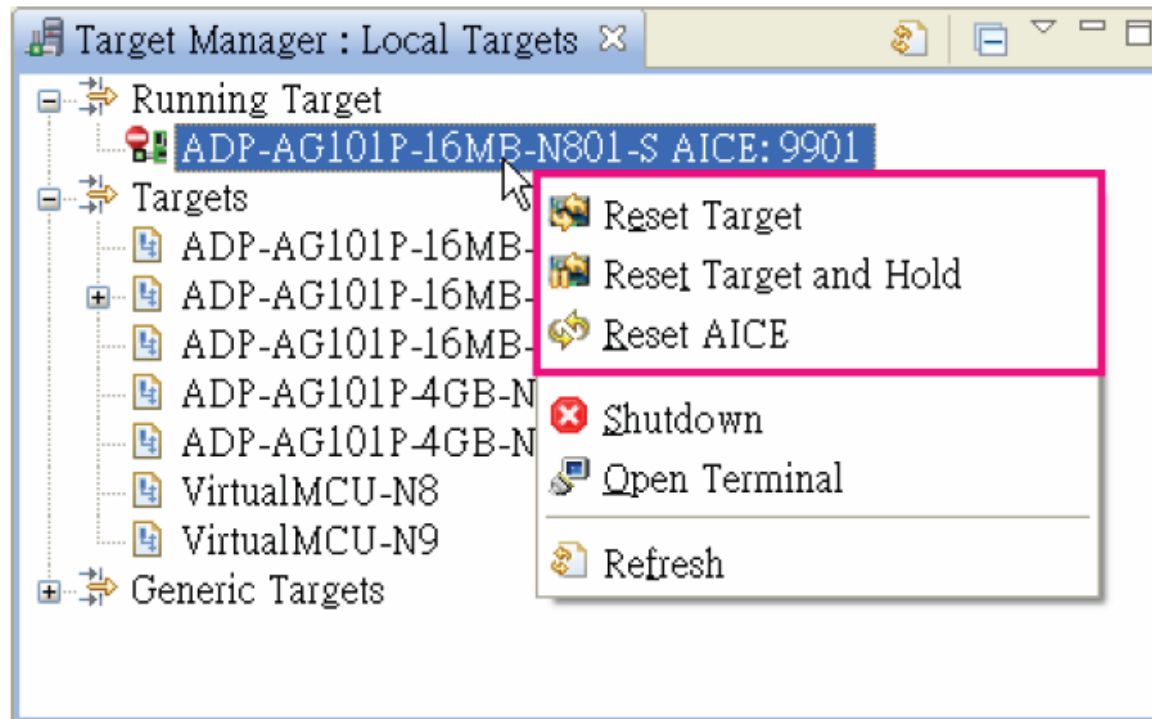


Resets in Running Target



Resets in AndeSight

AndeSight	Andes ICE Box	JTAG Connector	Which module would be reset?	Action after reset
Reset Target	ICE Box is NOT reset	nSRST is triggered	Depends on the implementation. Normally, the core and bus clock domains are reset. The TCK domain modules are NOT reset.	Free run
Reset Target and Hold				CPU stops at first instruction and enters debug mode.
Reset AICE	ICE Box is reset	TRST is triggered	The TCK domain modules are reset.	Free run

Thank You!



Andes Core™

www.andestech.com